



MARCH1 Polyclonal Antibody

Catalog No	YP-Ab-02668
Isotype	IgG
Reactivity	Human;Rat;Mouse;
Applications	IHC;IF;WB;ELISA
Gene Name	44986
Protein Name	E3 ubiquitin-protein ligase MARCH1
Immunogen	Synthesized peptide derived from the Internal region of human 40603.
Specificity	MARCH1 Polyclonal Antibody detects endogenous levels of 40603 protein.
Formulation	Liquid in PBS containing 50% glycerol, 0.5% BSA and 0.02% sodium azide.
Source	Polyclonal, Rabbit,IgG
Purification	The antibody was affinity-purified from rabbit antiserum by affinity-chromatography using epitope-specific immunogen.
Dilution	WB 1:500-2000 IHC: 1/100 - 1/300. ELISA: 1/40000.. IF 1:50-200
Concentration	1 mg/ml
Purity	≥90%
Storage Stability	-20°C/1 year
Synonyms	MARCH1; RNF171; E3 ubiquitin-protein ligase MARCH1; Membrane-associated RING finger protein 1; Membrane-associated RING-CH protein I; MARCH-I; RING finger protein 171
Observed Band	32kD
Cell Pathway	Golgi apparatus, trans-Golgi network membrane ; Multi-pass membrane protein . Lysosome membrane ; Multi-pass membrane protein . Cytoplasmic vesicle membrane ; Multi-pass membrane protein . Late endosome membrane ; Multi-pass membrane protein . Early endosome membrane ; Multi-pass membrane protein . Cell membrane ; Multi-pass membrane protein .
Tissue Specificity	Expressed in antigen presenting cells, APCs, located in lymph nodes and spleen. Also expressed in lung. Expression is high in follicular B-cells, moderate in dendritic cells and low in splenic T-cells.
Function	domain:The RING-CH-type zinc finger domain is required for E3 ligase activity.,function:E3 ubiquitin-protein ligase that may mediate ubiquitination of TFRC, CD86 and FAS, and promote their subsequent endocytosis and sorting to lysosomes via multivesicular bodies. E3 ubiquitin ligases accept ubiquitin from an E2 ubiquitin-conjugating enzyme in the form of a thioester and then directly transfer the ubiquitin to targeted substrates.,pathway:Protein modification; protein ubiquitination.,similarity:Contains 1 RING-CH-type zinc finger.,tissue specificity:Expressed in lymph nodes, spleen and lung.,

**Background**

MARCH1 is a member of the MARCH family of membrane-bound E3 ubiquitin ligases (EC 6.3.2.19). MARCH proteins add ubiquitin (see MIM 191339) to target lysines in substrate proteins, thereby signaling their vesicular transport between membrane compartments. MARCH1 downregulates the surface expression of major histocompatibility complex (MHC) class II molecules (see MIM 142880) and other glycoproteins by directing them to the late endosomal/lysosomal compartment (Bartee et al., 2004 [PubMed 14722266]; Thibodeau et al., 2008 [PubMed 18389477]; De Gassart et al., 2008 [PubMed 18305173]). [supplied by OMIM, Mar 2010],

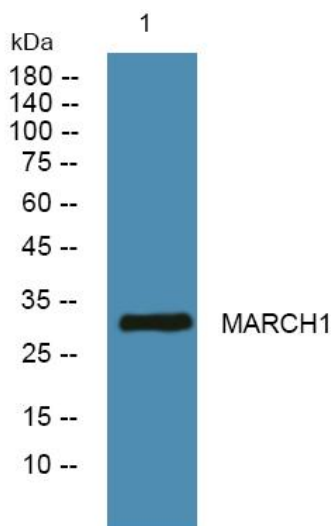
matters needing attention

Avoid repeated freezing and thawing!

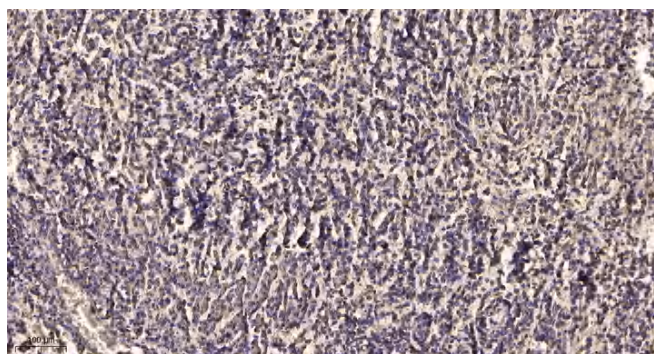
Usage suggestions

This product can be used in immunological reaction related experiments. For more information, please consult technical personnel.

Products Images



Western blot analysis of lysates from DU145 cells, primary antibody was diluted at 1:1000, 4° over night



Immunohistochemical analysis of paraffin-embedded human meningioma. 1, Antibody was diluted at 1:200(4 ° overnight). 2, Tris-EDTA,pH9.0 was used for antigen retrieval. 3,Secondary antibody was diluted at 1:200(room temperature, 45min).